

WILLOW PREMIUM

**STARTING FROM THE LOW 645,000 'S
(PRE-CONSTRUCTION)



**Pricing will vary by location and final model selected.



INDEX

01

Features

03

Floor Plan

04

Room Schedule

05

Integrated No Glass
Solar Roof System (optional)

06

Option page

06

Questions



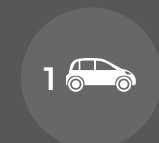
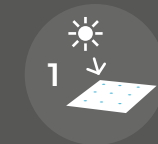
LIVING ROOM

FEATURES

- *2716 sqft
- Integrated No Glass Solar Roof System (optional)
- 3.5 Bathrooms
- 4 Bedrooms
- Covered Garage



KITCHEN



*All dimensions are approximate, and for reference only.



LIVING ROOM

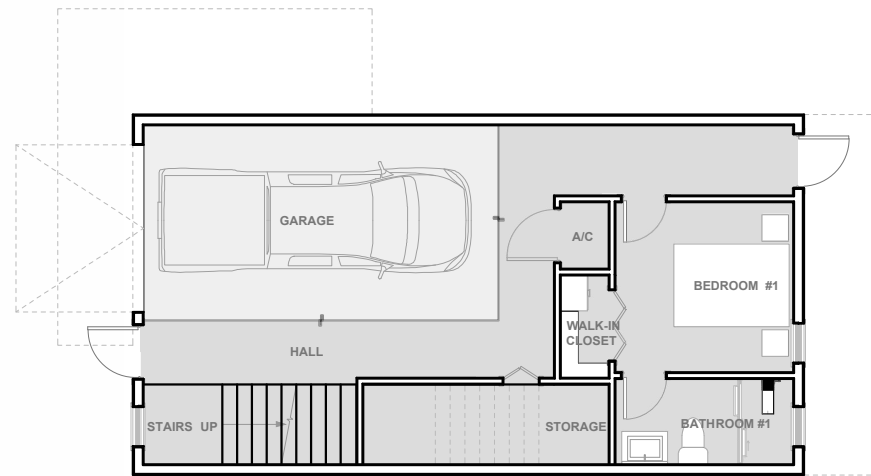


BEDROOM

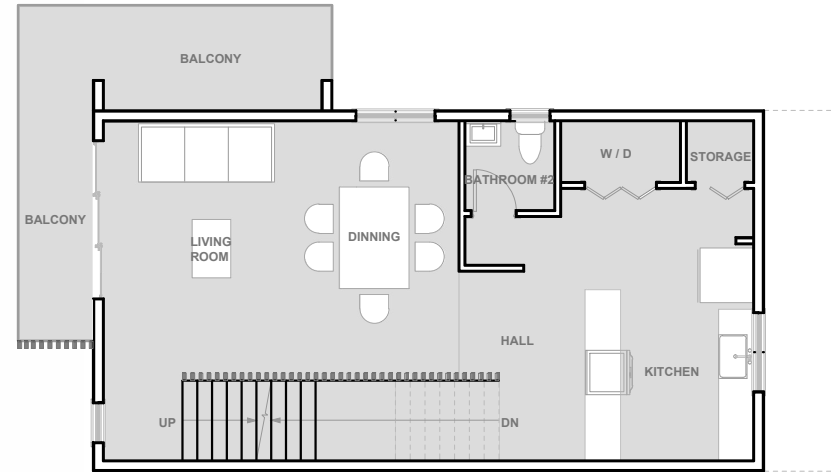
FLOOR PLAN

*Living space: 2716 sqft

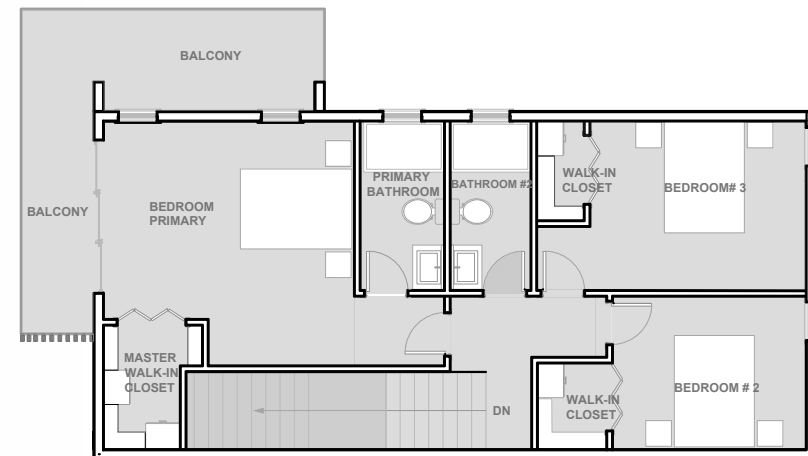
FIRST
FLOOR PLAN



SECOND
FLOOR PLAN



THIRD
FLOOR PLAN



*All dimensions are approximate, and for reference only.

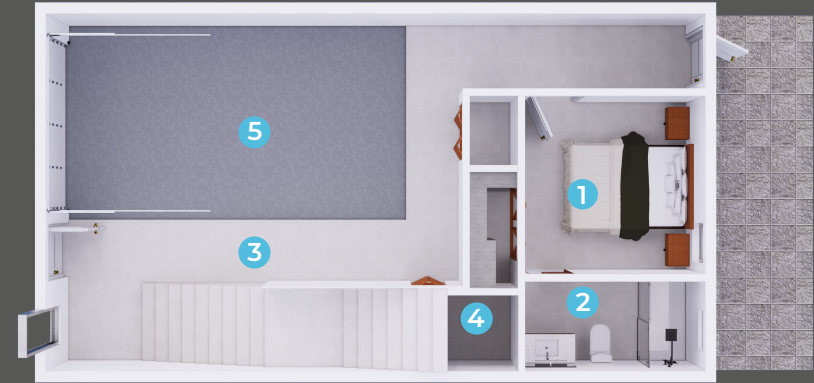
ROOM SCHEDULE

	Name	*Area sqft
FIRST FLOOR PLAN	1. Bedroom #1	134
	2. Bathroom #1	59
	3. Hall	246
	4. Storage	74
	5. Garage	240
		*768
SECOND FLOOR PLAN	6. Kitchen	212
	7. Bathroom #2	34
	8. Living & dining room	314
	9. Hall	211
	10. Balcony	159
		*930
THIRD FLOOR PLAN	11. Bedroom #2	147
	12. Bedroom #3	178
	13. Bathroom #2	55
	14. Primary Bedroom & Bathroom	339
	15. Hall	136
	16. Balcony	163
		*1018

TOTAL LIVING AREA *2716

*All dimensions are approximate, and for reference only.

FIRST FLOOR PLAN

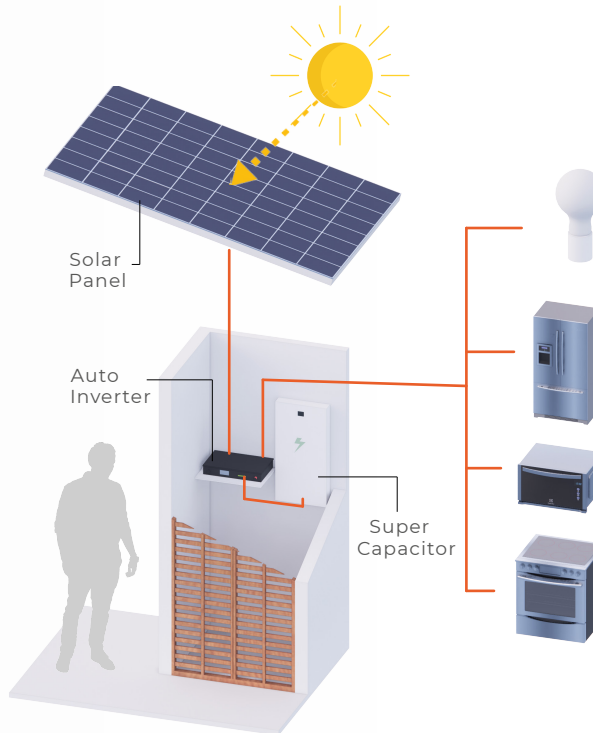


SECOND FLOOR PLAN



THIRD FLOOR PLAN





**Up to 100% of the grid capable.

INTEGRATED NO GLASS SOLAR ROOF SYSTEM (OPTIONAL)

Eco-One Homes have been engineered to endure most types of GEO EVENTS. In addition we have added options that can prevent expensive annual maintenance costs and most importantly, lower your expenses for insurance, electricity, and other pesky costs that come with homeownership. As we say, it is the way your home is built that will help reduce your out of pocket expenses for many years to come.

SOME BASIC DIFFERENCES

	Eco-Protection	Conventional Construction
Termite free	Yes	No
Mold free	Yes	No
Eco Friendly	Yes	No
Hurricane Resistance	Absolutely	Minimum



SOLAR PANEL DETAIL

OPTION – SOLAR PLUS OFF GRID 50% SOLAR

(1 day, 2 day, 3 day) Emergency stand by
*Up to 30% federal rebate of system.

** Monthly Credit By Metered Exchange
(By Upgrade Level 2)

**Check by january next year of the power
not Used (By upgrade level 2)

**Average savings of \$180.00 monthly.
With off grid 100% "Option" vs Emergency only
(Ask about upgrade level 2)

**Rebates may be available based on loca-
tion (State, City)

**QUESTIONS

CONTACT ONE OF OUR TEAM EXPERT.



Or Visit:
www.eco-onebrandhomes.com/register-2/

eco-onebrandhomes.com 