



*EcoOne*<sup>TM</sup>  
*Redesign Affordable Living*

The main EcoOne logo features a blue house icon with a white window and a green leaf sprig above the "o". The word "EcoOne" is in a large, black, serif font, with a blue and green globe as the letter "o". Below the name is the tagline "Redesign Affordable Living" in a smaller, italicized serif font.

By:  **Solagenica**  
TECHNOLOGIES INC.

The Solagenica logo is a yellow diamond shape with a white outline and a white "S" inside.

\*\*STARTING FROM THE LOW 389,000 'S

# BUNGALOW 1400

\*\*Pricing will vary by location and final model selected.





Features	01
Floor Plan	02
Room Schedule	03
Option page	04
Integrated No Glass Solar Roof System (optional)	05 06
Questions	07



LIVING ROOM



LIVING ROOM



DINING ROOM

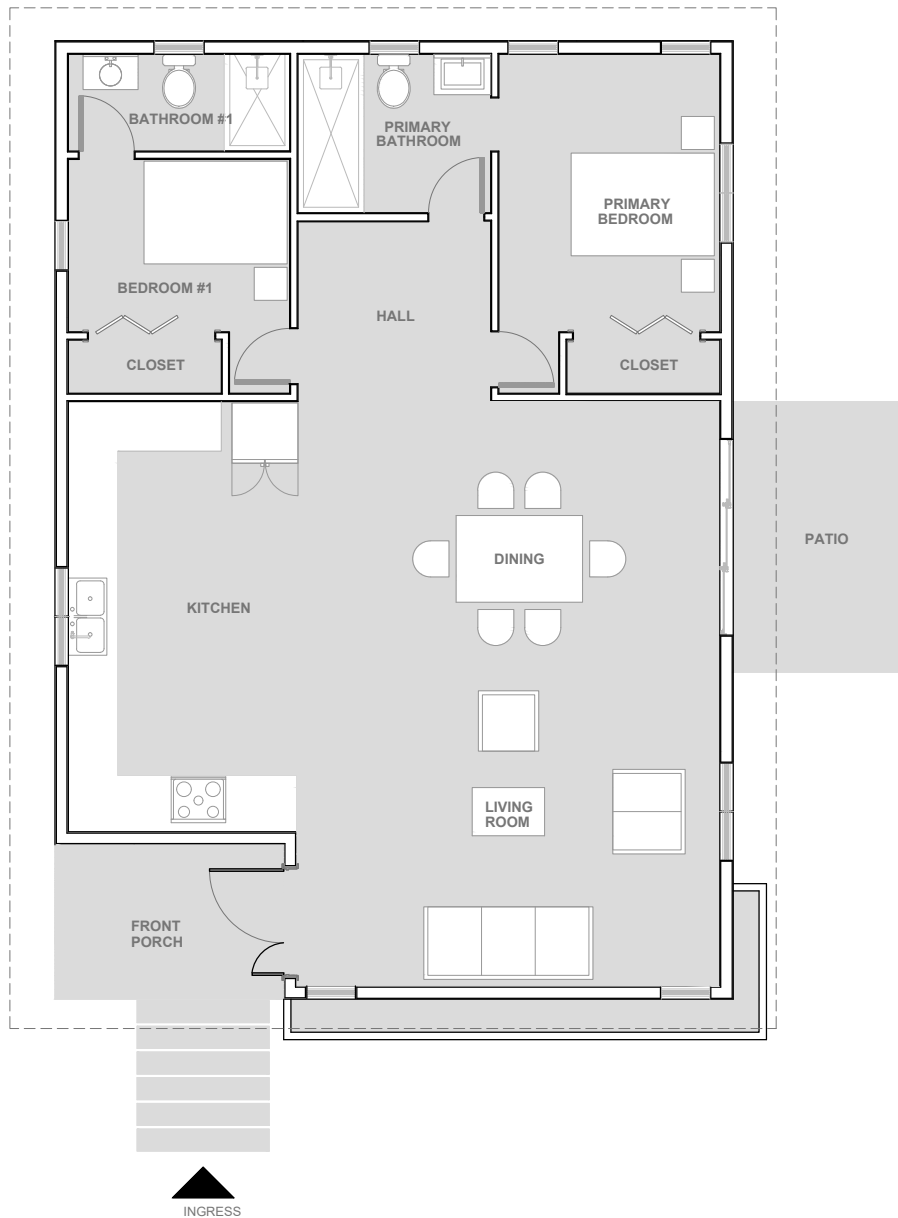
# FEATURES

- \*1400 sqft
- Integrated No Glass Solar Roof System (optional)
- 2 Bathrooms
- 2 Bedrooms



# FLOOR PLAN

FLOOR PLAN



\*Living space: 1262 sqft  
Outdoor space: 175 sqft

# ROOM SCHEDULE



## ROOM SCHEDULE

Name	*Area sqft
1. Living and dining room	537
2. Kitchen	221
3. Hall	72
4. Primary Bathroom	72
5. Primary Bedroom	180
6. Bedroom #1	121
7. Bathroom #1	59
	<b>*1262</b>
8. Front porch	77
9. Patio	98
	<b>175</b>

**TOTAL LIVING AREA 1437**

\*All dimensions are approximate, and for reference only.

# OPTION – SOLAR PLUS OFF GRID 50% SOLAR

(1 day, 2 day, 3 day) Emergency stand by

\*Up to 30% federal rebate of system.

\*\* Monthly Credit By Metered Exchange

(By Upgrade Level 2)

\*\*Check by january next year of the power not Used

(By upgrade level 2)

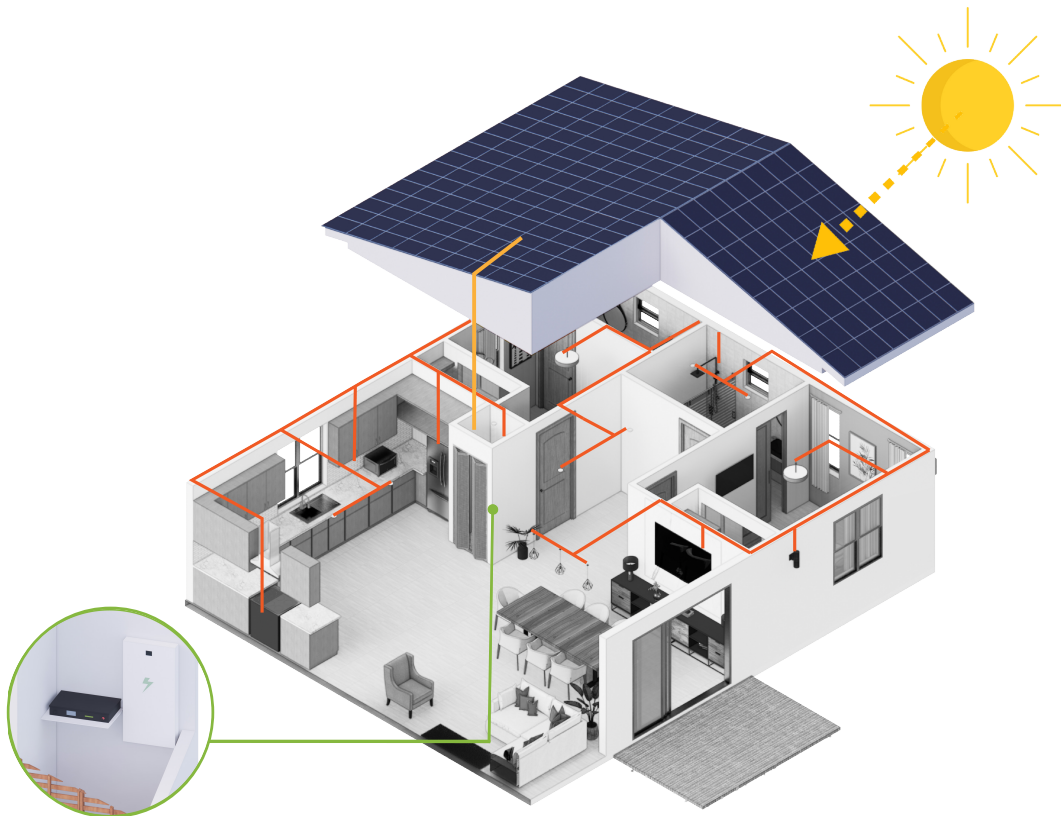
\*\*Average savings of \$180.00 monthly.

With off grid 100% "Option" vs Emergency only

(Ask about upgrade level 2)

\*\*Rebates may be available based on location (State, City)

# INTEGRATED NO GLASS SOLAR ROOF SYSTEM (OPTIONAL)



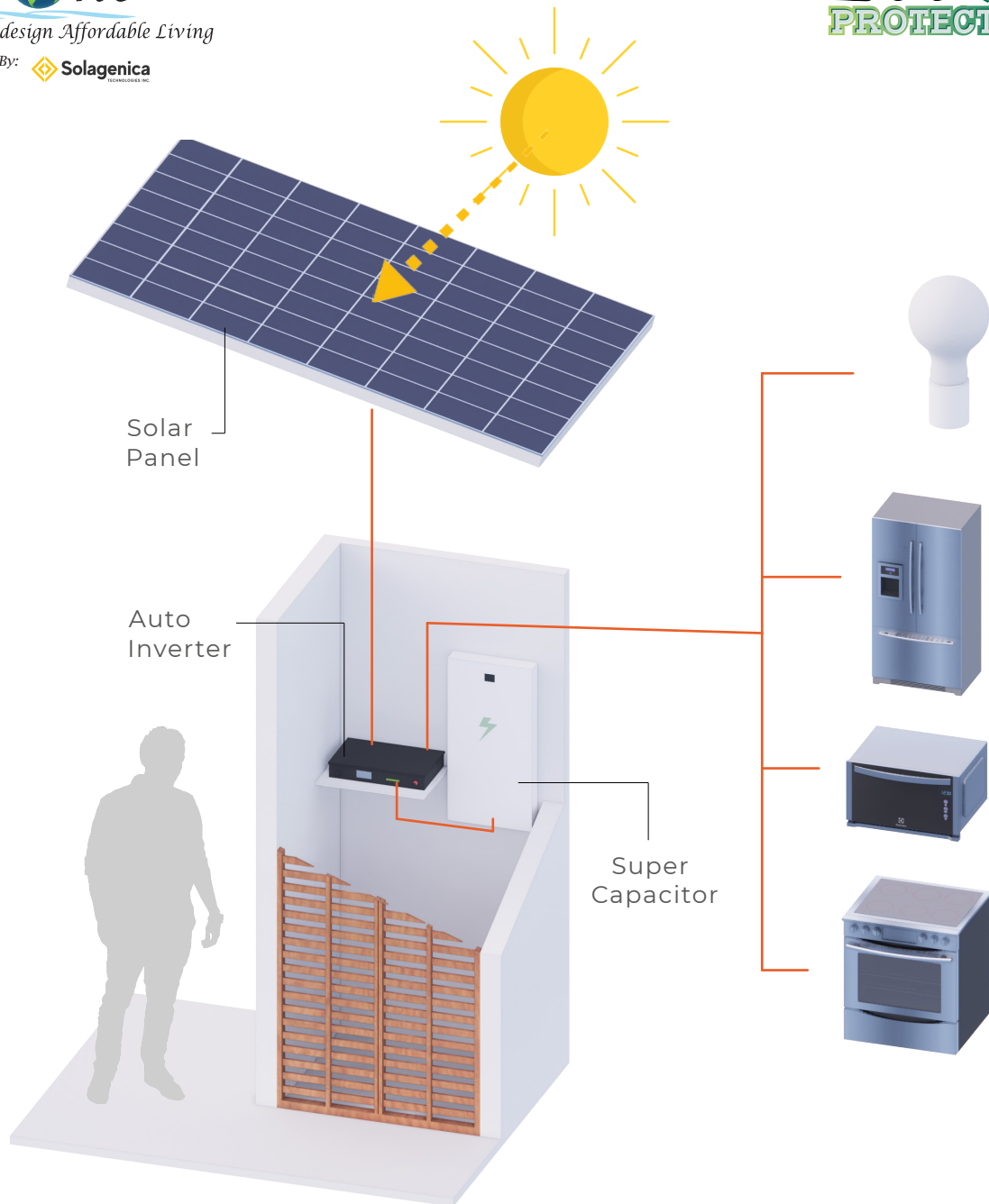
## SOLAR PANEL DETAIL

Eco-One Homes have been engineered to endure most types of GEO EVENTS. In addition we have added options that can prevent expensive annual maintenance costs and most importantly, lower your expenses for insurance, electricity, and other pesky costs that come with homeownership. As we say, it is the way your home is built that will help reduce your out of pocket expenses for many years to come.

## SOME BASIC DIFFERENCES

	Eco-Protection	Conventional Construction
 Termite free	Yes	No
 Mold free	Yes	No
 Eco Friendly	Yes	No
 Hurricane Resistance	Absolutely	Minimum

# INTEGRATED NO GLASS SOLAR ROOF SYSTEM (OPTIONAL)



\*\*Up to 100% of the grid capable.



# \*\*QUESTIONS

CONTACT ONE OF OUR TEAM EXPERT.



Or Visit:

[www.eco-onebrandhomes.com/register-2/](http://www.eco-onebrandhomes.com/register-2/) 

[eco-onebrandhomes.com](http://eco-onebrandhomes.com)

